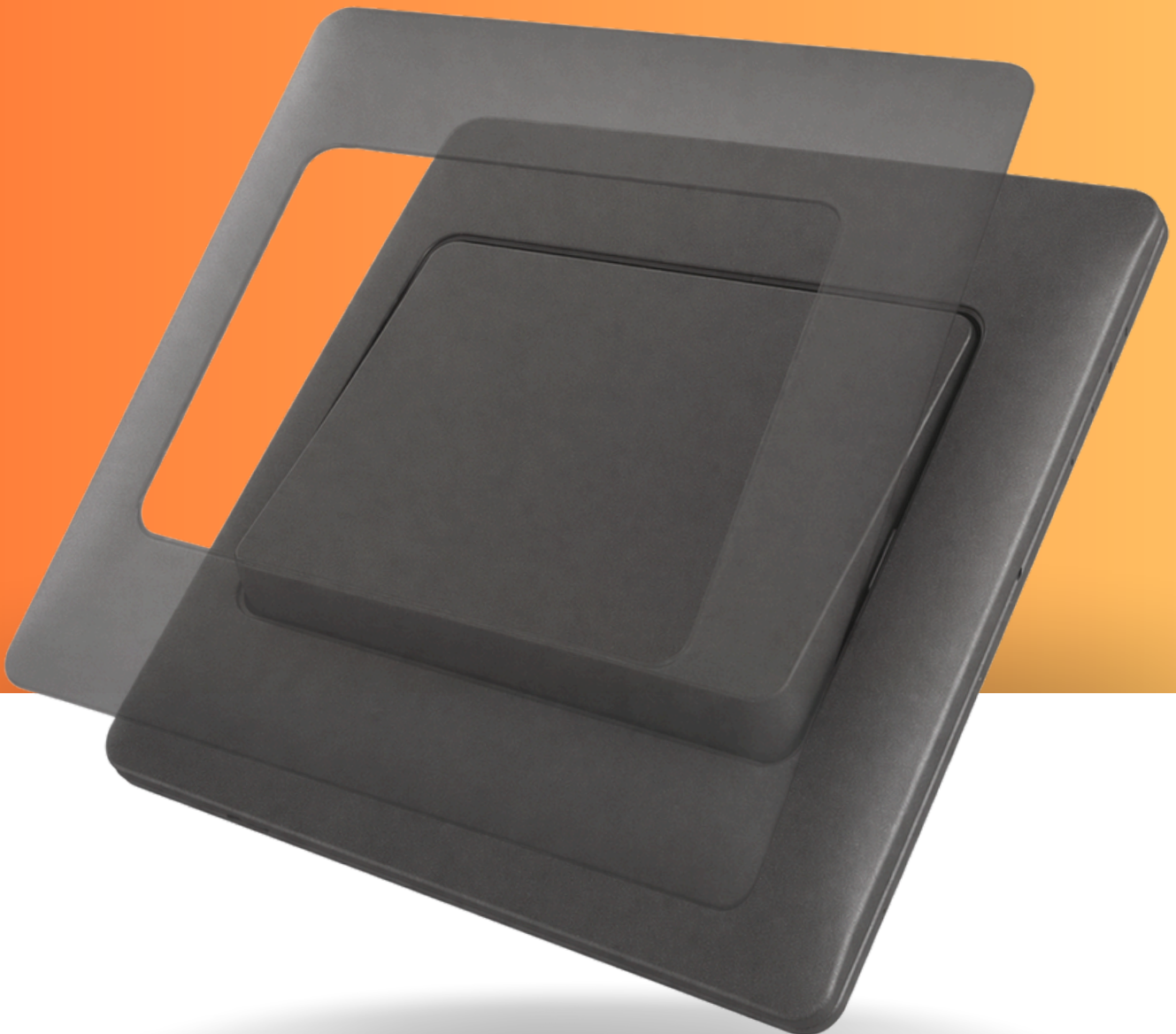


*Personal Individualistic
Artistic*





This favourite range of switches truly lives up to its name. Radiance takes the aesthetic factor of electric equipment beyond that which pleases the eye. It features 'glow-in-the-dark' switch locators that is a great idea in a room without illumination that acts as a 'beacon' for the user to find exactly where it is.

Get new switch plates to replace the existing ones if you feel like 'redecorating' your wall area. With so many choices, boredom is really not an option.



K271
1 Gang 1 Way Switch



K272
2 Gang 1 Way Switch



K273
3 Gang 1 Way Switch



K274
4 Gang 1 Way Switch

K271-2
1 Gang 2 Way Switch

K272-2
2 Gang 2 Way Switch

K273-2
3 Gang 2 Way Switch

K274-2
4 Gang 2 Way Switch

K261
1 Gang Retractive Switch

K262
2 Gang Retractive Switch

K263
3 Gang Retractive Switch

K264
4 Gang Retractive Switch

K277
1 Gang Intermediate Switch



K271-B
1 Gang 1 Way Bell Switch



K271L
1 Gang 1 Way Switch with Neon



K272L
2 Gang 1 Way Switch with Neon



K232L
32A 1 Gang 1 Way DP Switch with Neon

K271L-2
1 Gang 1 Way Switch with Neon

K272L-2
2 Gang 1 Way Switch with Neon

K220L
20A 1 Gang 1 Way DP Switch with Neon

K271L-DP
20A 1 Gang 1 Way DP Switch with Neon

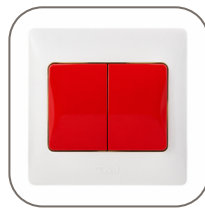
K272L-DP
20A 2 Gang 1 Way DP Switch with Neon

K245L
45A 1 Gang 1 Way DP Switch with Neon

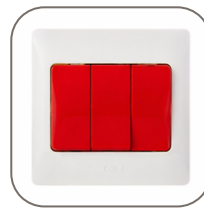
K2720L-2DP
20A 1 Gang 2 Way DP Switch with Neon



K271-2/S111
1 Gang 2 Way Switch - Red Rocker



K272-2/S111
2 Gang 2 Way Switch - Red Rocker



K273-2/S111
3 Gang 2 Way Switch - Red Rocker



K8613S
13A 1 Gang Switched Socket



K8613S-RA
13A 1 Gang Switched Socket-Red Rocker



K8613SD
13A 2 Gang Switched Socket



K8613SD-RA
13A 2 Gang Switched Socket-Red Rocker



K815SA
15A 1 Gang Switched Socket



K818S
13A 1 Gang Switched Universal Socket



K829
10A 1 Gang 5 Pin Socket



K827
16A 1 Gang Schuko Socket Outlet



K525
25A 250V Front Entry Flex Outlet



KX811-PC
1Gang 8 Core RJ45 Cat.6 Data Socket



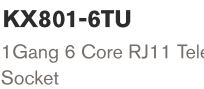
KX812-PC
1Gang 8 Core RJ45 Cat.6 Data Socket



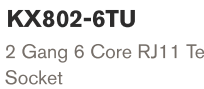
K801TV
1 Gang TV Socket



K801ETV
1 Gang Broadband Socket (F-Connector)



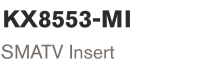
KX801-6TU
1Gang 6 Core RJ11 Telephone Socket



KX802-6TU
2 Gang 6 Core RJ11 Telephone Socket



K8553-FR
SMATV Face Plate



KX8553-MI
SMATV Insert



KX211-M2
600W 1 Gang Dimmer with Off Position



K3-M2
1-10V DC Output Dimmer



K2C-MMD
100VA Fan Speed Selector (3 Speed)



K221-OFF
3-Position Switch (L1-Off-L2)



K2C-DMB
Do Not Disturb & Make Up Room with Bell Press



K2772L-2
Do Not Disturb & Make Up Room Switch with Green/Red LED



K6-2KT
1 Gang 20A 230V Keycard Switch with Time-Off Delay

K6-KT9
1 Gang 10A 9-24V AC/DC Keycard Switch with Timed-Off Delay

K9-2KT
1 Gang 20A 100-240VAC RFI Keycard Switch with Timed-Off Delay

K9-KT
1 Gang 10A 100-240VAC High Frequency Keycard Switch with Time Delay

K9-KT9
1 Gang 10A 9-24V High Frequency Keycard Switch with Time Delay



K818SD
13A 2 Gang Switched Universal Socket



K828
115/230V Shaver Socket with Overcurrent Protection



K1201
1 Gang Adapter Plate for Deco Module (2 Module Size)



K1201
1 Gang Adapter Plate for Deco Module

W2747
400W Trailing Edge Dimmer



K1201
1 Gang Adapter Plate for Deco Module

W2221/S332*2
3-Position Switch (L1-Off-L2)



K2-AL
Panic Button

T&J

www.tjelec.com.sg

T&J Electric (Singapore) Pte Ltd

Tel: +65 6547 4333 Fax: +65 6547 4666

T&J Electric (Malaysia) Sdn Bhd

Tel: +603 7865 1613 Fax: +603 7865 9613

For further information, please contact your nearest dealer: